

SKU : 180624

This ROTURN M Series machine has all the features of a classic compact CNC production lathe. Modern, rigid inclined-bed design with linear guides on all axes, powered collet chuck and hydraulically moved tailstock quill. Including C-axis, 12-station tool turret, and driven tools for axial and radial drilling and milling A link conveyor for chip removal and a highly efficient coolant system complete the equipment package. The Siemens 828 D Basic control meets all requirements for advanced control technology.

- Powerful main spindle motor
- High-resolution C-axis
- 12-station tool turret with driven tools
- Chip conveyor included
- Siemens 828 D control



TECHNICAL SPECS

WORKING AREA

Workpiece length (max.)	340 mm
Center height	200 mm
Turning diameter over bed	400 mm
Turning diameter over support	250 mm
Machining length (max.)	330 mm

TRAVELS

Travel X-axis	150 mm
Travel Z-axis	380 mm

HEADSTOCK

Lathe chuck diameter	250 mm
Speed range	50 1/min - 2000 1/min
Spindle mount	A2-8
Spindle bore	86 mm
Spindle bore with draw tube	75 mm

RAPID FEED

Rapid feed X-axis	20000 mm/min
Rapid feed Z-axis	25000 mm/min

TOOLING

Number of tool stations	12 positions
Tool shank dimensions	20 mm x 20 mm
Boring bar mount Ø	32 mm
Speed, driven tools	3000 1/min

TAILSTOCK

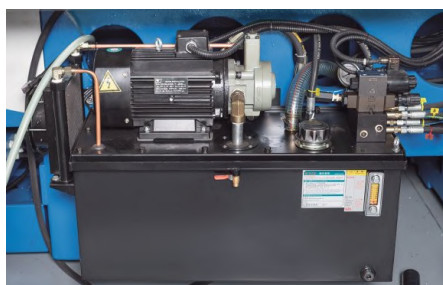
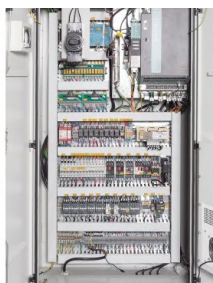
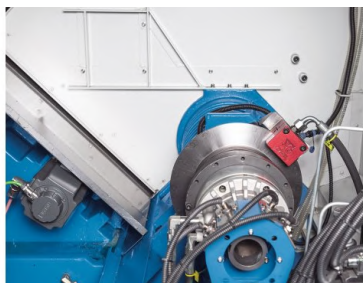
Tailstock taper	5 MT
Tailstock quill diameter	88 mm
Tailstock quill stroke	80 mm

DRIVE CAPACITY

Main motor rating	15 / 11 kW
Motor rating coolant pump	0.18 kW
Motor rating, driven tools	2.3 kW
Driven tools, continuous load	2.3 kW

MEASURES AND WEIGHTS

Overall dimensions (length x width x height)	3.75 m x 1.9 m x 1.92 m
Weight	3760 kg



PRODUCT DETAILS

Highlights

- Future-proof: the Siemens 828 D Basic control meets all requirements for advanced control technology
- A hydraulic 3-B chuck with passage is included in the scope of delivery as standard
- Hinged belt conveyor and high-performance coolant system included in standard equipment

Machine Design

- Heavy machine frame with inclined bed ensuring high rigidity and easy chip removal
- Precise linear guides in X and Z for high stability and accuracy even at highest loads
- The enclosed work space is easily accessible through a large sliding door
- Tailstock with hydraulically operated quill
- Automatic central lubrication system ensures reliable lubrication of guideways

Spindle

- Max. Spindle speed 3.000 1/min (Roturn 400M) or 2.000 1/min (Roturn 402M)
- Motor power 11/15 kW

Tool Changer

- The 12-station tool turret driven tools (BMT) ensures a large work area and quick and precise tool changes
- Solid structure and powerful clamping virtually eliminate vibrations resulting in longer tool life
- Powerful main drive and a wide speed range for milling, drilling and thread cutting
- High-resolution C-axis allows for precise contour cutting and precise positioning

STANDARD EQUIPMENT

12-station tool changer
 1 piece driven tool holder radial
 1 piece driven tool holder axial
 Bar feeder interface
 Measuring cycles (6FC5800-0AP28-0YB0)
 Siemens 828 D control
 Hydr. 3-jaw- lathe chuck 200 mm with borehole
 Hydr. tailstock
 Automatic central lubrication
 Chain-type chip conveyor
 Heat Exchanger for electric control cabinet
 Closed work space
 LED work lamp
 Coolant system
 Air gun
 Coolant system flush gun
 Operating tools
 Operator manual

OPTIONAL EQUIPMENT

- Renishaw HPRA measuring system, SKU : 254042
- Renishaw HPMa measuring system, SKU : 254043
- Parts catcher with box, SKU : 254041



KNUTH on YouTube

Information to the point

On our YouTube channel you can find videos for nearly all machines from our program. We show the machines from current deliveries and you get an impression of the handling, the processing quality and the machining performance.

**Are you interested in a machine for which you cannot find a current video?
Please feel free to contact us!**