



# Guillotine Shears KMT S 2554 NC

## SKU : 132211

This model from the KMT S NC series is a modern, high-quality guillotine shear with high-quality components. The powerful motorised drive offers a high cutting capacity of up to four sheet thicknesses. The very sturdy design with a slotted blade bar and a small cutting angle of 1.3 degrees also enables cuts with minimal distortion in the workpiece. The cutting gap can be adjusted manually, while the cutting length is positioned via the NC control. Simple operation and quick adjustment reduce non-productive times in production.

- Solid steel weldment
- NC-controlled back gauge can be easily programmed
- Automatic, semi-automatic and manual mode
- Blades with multiple cutting surfaces
- Manual kerf adjustment



## TECHNICAL SPECS

### WORKING AREA

Working length	2550 mm
Cutting angle	1.3 deg
Work table height	810 mm
Work table depth	455 mm
Number of support arms	3 positions
Support arms	940 mm
Strokes per minute	29 H/min

### BACK GAUGE

Rear stop	750 mm
-----------	--------

### CUTTING CAPACITIES

Plate thickness (max.) - 450 N/mm <sup>2</sup>	0.1 mm - 4 mm
Plate thickness(max.) - 700 N/mm <sup>2</sup>	2 mm

### DRIVE CAPACITY

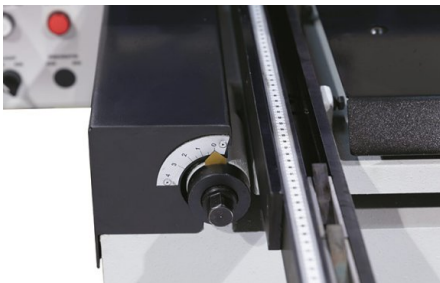
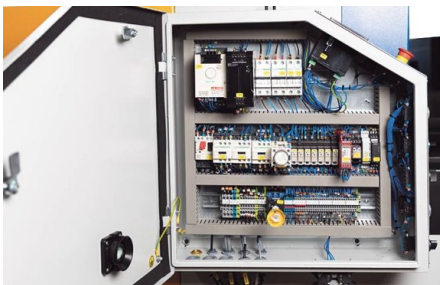
Motor rating main drive	7.5 kW
-------------------------	--------

### MEASURES AND WEIGHTS

Overall dimensions (length x width x height)	3.2 m x 2.15 m x 1.45 m
Weight	3500 kg



*Material support rollers are recessed in the table for easy workpiece handling*



## PRODUCT DETAILS

### Machine Frame and Drive System

- The machine frame is made of a very rigid, solid steel weldment
- The upper knives are reversible for use of both sides, and the lower knives feature 4 cutting edges
- A rigid, continuous hold-down fixes the sheet metal plate right in front of the cut line
- The optimum kerf for machining can be adjusted manually

### Material Support

- The rigid side angle stop simplifies alignment of the plate to the cut line
- Rugged support arms ensure a strong hold of large plates
- Material support rollers are recessed in the table for easy workpiece handling

### Ergonomic Design

- The mobile foot switch gives the operator added flexibility and both hands are free for handling the workpiece
- For a better view of the cut line, the hand safety guard can be flipped up or down
- The bright LED illumination of the cut line creates a clearly visible shadow on the marked line

### Rear stop:

- The motorized back gauge ensures precise positioning in automatic, semi-automatic and manual modes
- The NC-controlled back gauge can be easily and quickly programmed
- The easy accessible work area at the back gauge is secured by light curtain
- The machine can be equipped with an optional NC-controlled back gauge for a length up to 1000 mm, or a sheet hold-up device

## STANDARD EQUIPMENT

BRL NC controller  
 Motorized rear stop (750 mm)  
 Manual blade gap adjustment  
 Foot pedal with emergency stop switch  
 Cut-line lighting  
 Light curtain  
 Squaring arm  
 Support arms with T-slots and tilting stop  
 Ball bearing front table  
 Top blade with 2 sides  
 Finger guard  
 Operator instructions

## OPTIONAL EQUIPMENT

- Motorized back gauge 1000 mm (BRL 401.2 NC), SKU : 256816
- Adjustable angle stop on the support arm (the left one) 0-180°, SKU : 253666
- Pneumatic sheet back support, SKU : 253667



## KNUTH on YouTube

### Information to the point

On our YouTube channel you can find videos for nearly all machines from our program. We show the machines from current deliveries and you get an impression of the handling, the processing quality and the machining performance.

**Are you interested in a machine for which you cannot find a current video?  
Please feel free to contact us!**