



**SKU : 423514**

## CUSTOM MODEL

The Vector series is the compact all-in-one machining solution, designed and preconfigured for complex manufacturing challenges. The machines are designed using the latest FEM analysis software. The production takes place under strict quality control in order to guarantee perfect execution. Both the tried and tested Meehanite cast and the delta construction of the column ensure additional stability of the machine frame. The consistently high-quality components guarantee smooth operation during multiple shifts.

- Optimized frame design using FEM analysis
- Extra wide Y-shaped meehanite column for max. rigidity
- 30-bar through-spindle coolant to ensure optimum machining quality
- Built for multi-shift production
- High customization and automation possibilities
- 2 years standard warranty

## TECHNICAL SPECS

### WORKING AREA

Table dimensions	1100 mm x 550 mm
Table load capacity	800 kg
Spindle nose-to-table surface distance	150 mm - 700 mm
Spindle center - column	520 mm

### TRAVELS

Travel X-axis	1000 mm
Travel Y-axis	550 mm
Travel Z-axis	550 mm
Guideway	Roller

### HEADSTOCK

Spindle speed	10000 1/min
Spindle mount	SK 40
Torque, constant	57 Nm
Spindle bearing	7012 x 4
Spindle drive method	Riemenantrieb

### RAPID FEED

Rapid feed X-/ Y-axis	36000 mm/min
Rapid feed Z-axis	15000 mm/min

### FEED

Work feed X-axis	10000 mm/min
Work feed Y-axis	10000 mm/min
Work feed Z-axis	10000 mm/min

### TOOLING

Tool changer type	Doppelarm
Number of tool stations	24 positions
Tool selection	Memory random
Tool size Ø x L (max.)	80 mm x 350 mm
Tool weight max.	7 kg
Tool-change time tool/tool	1.8 sec
Tool-changing time chip/chip	3.9 sec

### ACCURACIES

Repeatabilities	± 0,003 / ± 0.00012" mm
Positioning accuracies	± 0,005/ 0.0002" mm

### DRIVE CAPACITY

Main drive, continuous load	9 kW
Total power consumption	15 kVA
Voltage	400 V
Mains frequency	50 Hz

### CONTROL

Control	Siemens
---------	---------

### MEASURES AND WEIGHTS

Overall dimensions (length x width x height)	2.62 m x 2.2 m x 2.7 m
Weight	4600 kg

## PRODUCT DETAILS

### Highlights

- Rigid machine structure with extra deep center of gravity and small footprint

### Machine Design

- 30 mm preloaded ball screws combined with a digital drive package provide a rigid table guide and high torque
- A major focus during development of this machine was a space-saving design
- Dual-arm tool changer with 24 stations ensures adequate flexibility and capacity for every day production needs
- The Vector Series features linear guides on X, Y and Z to ensure high accuracy made possible by lower friction
- 30-Bar internal cooling for optimum machining quality

### Spindle

- Spindle runs on multiple bearings to ensure excellent absorption and dissipation of forces during machining

### Tool Changer

- Changing times (1.8 seconds tool-to-tool and 3.9 seconds chip-to-chip) increase spindle up-time and machine output

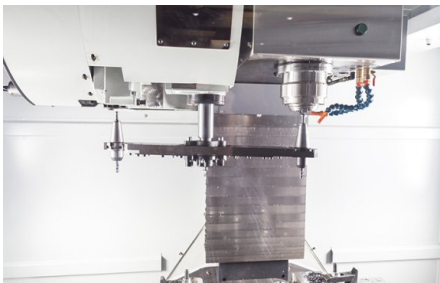
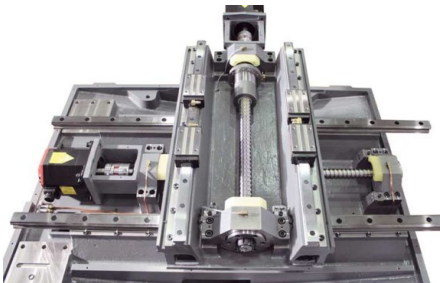
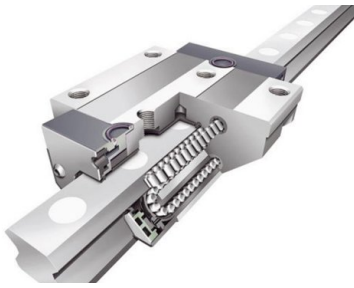
### Control Siemens Sinumerik 828D

- The top specialist for demanding milling operations
- Compact, robust, maintenance-free control panel-based CNC
- Comfortable program and parameter input via QWERTY keyboard
- 100 adjustable zero offsets
- Synchronous actions, and quick output of help functions
- Siemens Sinumerik 828 D Milling
- Maximum machining precision
- Intelligent kinematic transformations for machining of cylindrical parts, and for angled workpiece levels
- SINUMERIK MDynamics with the new Advanced Surface feature: for perfect part surfaces and shortest machining times in mold making applications
- Highlights & CNC performance data and functions Siemens Sinumerik 828 D Milling
- ShopMill: shortest programming time for single parts and small batch productions
- ProgramGUIDE: fastest machining time and maximum flexibility for large series productions
- Unique spectrum of technology cycles - from milling contours with residual material recognition to process measurements
- Animated Elements: unique operation and programming assistance with animated sequences
- Modern data transfer options via USB stick, CF card and network (Ethernet)
- Easy Message: maximum machine availability due to process monitoring per texting (SMS)
- SINUMERIK MDynamics package with Advanced Surface for mold making applications
- Jerk-limited acceleration
- Dynamic feed-forward control
- 4-axis simultaneous interpolation (X, Y, Z and rotary axis)
- Linear, circular and helical interpolation
- Tapping without compensating chuck, plus thread cutting
- Oriented spindle hold
- Toggle between inch and metric units
- FRAME concept for individual coordinate transformations, rotations, scaling and mirroring

### Optional equipment: Preparation (wiring) for Renishaw TS 27R and OMP 40

## STANDARD EQUIPMENT

Preparation for Renishaw TS 27 R  
Siemens 828D control with Shopmill  
Coolant through spindle 30 bar with double filter  
24-station tool changer with dual-arm  
Main spindle motor 9 kW  
ST 40 mount



*SINUMERIK 828D control with its unique CNC performance sets new standards for productivity*

Spindle oil cooler  
Chain-type conveyor with chip container  
Electronic hand-wheel  
Oil skimmer  
Automatic central lubrication  
Coolant system flush gun  
Chip wash system  
Heat Exchanger for electric control cabinet  
Telescoping axis cover  
USB port  
CF card reader  
Totally enclosed work space  
Work lamp  
3-color signal lamp  
Coolant system  
Adjustable machine feet  
Operating tools  
Operator instructions

## OPTIONAL EQUIPMENT

- Top cover for X.Mill/Vector 650-1000, SKU : 252819
- Connection for 4th axis (wiring only and axis chart), SKU : 253019
- Siemens Function: P25: 3D Simulation, SKU : 253378
- Siemens Function: P13: Residual Material Detection, SKU : 253379
- Siemens Function: P22: Simultaneous Recording, SKU : 253380
- Measuring Cycles, SKU : 253438
- Renishaw OTS wireless tool setter (OTS), SKU : 253598



## KNUTH on YouTube Information to the point

On our YouTube channel you can find videos for nearly all machines from our program. We show the machines from current deliveries and you get an impression of the handling, the processing quality and the machining performance.

**Are you interested in a machine for which you cannot find a current video?  
Please feel free to contact us!**